

Introduction

This is a training program for use with the nonlinear diagnostic system ma. Mezator refers to an entirely new class of devices, which are called "brainmachines".

What are they? At present, science and society in general, is faced with information overload. Every day, there are large and small discoveries, every year there are dozens of new machines and devices developed. This is certainly good. However, a person begins to drown in this sea of information, losing the big picture.

A century ago a doctor for correct diagnosis required the experience of thousands of years of medical observation. Today this requires numerous and costly research and analysis. What helped the doctor to set the correct diagnosis? The answer is basically an inexplicable feeling called intuition.

However, modern science has come very close to unraveling the phenomenon of intuition, and even more mysterious phenomenon of clairvoyance. The point here is that this is not a miracle or divine grace, but electromagnetic vibrations of very low frequency, which can transmit information in the human brain, bypassing the usual senses. Of the 10 million units of information only one is recognized, the others are fixed in the subconscious. Information from the sphere of the subconscious is extracted either spontaneously, or at the level of unusual, altered states of consciousness: hypnosis, dreaming, meditation, or while receiving psychotropic drugs. The whole world, including the human race, is deeply interconnected through a variety of informational signals. That's why techniques to obtain information from the sphere of the subconscious, are recognized, while modestly, as priorities in the development of science and society in the next century.

Numerous studies in the field of Energy-Informatics led to the creation of fundamentally new equipment capable of destroying the barrier between the conscious and the subconscious. This process (controlled research) is able to give an enormous amount of new information about the surrounding world. A special sphere of interest - medicine. These are new opportunities for diagnosis, different from conventional ultrasound and computer tomography. An indispensable instrument for mass prophylactic examinations of the population. Theoretical and experimental work, which made possible the development of Mezator products, was initiated in the late 19th century by electronics genius Nikola Tesla. This was then continued by George Lakhovsky, a scientist who studied the effects of radio waves on animal health and condition of plants; American researcher R. Rife, who investigated the effects on the human body not only radio, but electro-frequencies.

In 1950, R. Voll in Russia, discovered and developed a system of electrically testing the acupuncture points of human body. Voll's method was the first hardware method of research of the energy-state of an organism. It is done by testing the rates of electromagnetic conductivity at the end points of acupuncture meridians in a person using a special probe. The results of the study (in the form of digital or graphic indicators) may give an idea of the presence of inflammatory, dystrophic or atrophic pathology in the studied meridian and the corresponding organs. Another well-known method for diagnosing the state of energy in a person - is Kirlian's aura-diagnostics. It is used to determine the state of the electromagnetic field of a human in general. Status of individual organs is determined by the configuration of their biofield. NLS-diagnostic method allows the evaluation of the state of bio-energy of each organ individually. The results can be obtained in the form of visual images with the topography of the affected area, as well as graphical features which allow us to analyze damage to body tissue, allowing more accurately

to determine not only the type of injury (inflammation or destruction), but also to clarify the diagnosis. Research is conducted by resonance amplification of radiation to the studied organ and then recovery of evidence via a non-contact method by using trigger sensors.

The first version of a nonlinear analysis device had only a manual input of information, that is a doctor was actively involved in the diagnosis of a patient, through the use of low frequency vibrations that are close to the theta rhythm of the brain becomes more sensitive to radiation in the body of the patient. The results were recorded using the deviation of an L-shaped frame held by the physician-operator on Flanders's special scale (this scale is presented in the diagnostic module of the program). However, this method of research is too subjective and not safe for the health of the physician operator. This led to the development and creation of so-called trigger sensor, providing automatic input of information about the health of the patient in the computer. On what is the effect of trigger sensors?

For the first time a distant effect of interaction with objects of animate and inanimate nature, that is the transfer of data pulses from a man to machine was registered in the experiments of V.N. Kravkov in the 20-ies of our century. Under the guidance of prof. V. Togatova, reactions of various semiconductor structures on the impact of bio-operators (psychic), were studied. It has been experimentally proved that the human brain without the aid of wires can have an affect the sensitive sensor device.

Software developers, in a dialogue mode between the telemetry complex and the physician operator with remote biofeedback, designed for the perception of the brain activity of the operator or patient but depending on the objectives of the study and configuration of the complex and convert this information into a sequence of pulses with a special trigger sensor. This is reflected in the fact that the human brain receives a signal about the need to verify (test) this or that organ. The signal is fed to the monitor screen, as well as the head headphones in a series of electromagnetic waves peculiar to the healthy human body. This is possible because every organ and every cell in the human body has its own spectrum of electromagnetic waves. Thus we would like to ask the question - what is going on with the target organ? In response to the question, the brain of the subject gives an answer that is perceived by the trigger sensors.

In the model, the «Mezator» device offers a digital trigger sensor, simulated directly in the microprocessor of the main unit through the computer software and analog trigger sensor of the main research unit - pn-junction transistor, which increases the reliability of research.

The purpose of this training program is not a detailed physical justification of the principles of the «Mezator» device, since different devices are designed differently. Currently, there are several manufacturers of this equipment, "spinoffs" from the original research group. In particular, in the original version of Russian, the headphones were used as magneto-inductors with an oscillation frequency, which is close to the theta rhythm of the brain, while in later versions of the device - as a conductor of electromagnetic waves that are close to the alpha rhythm of the brain. A good effect is obtained from the use of electromagnetic waves as a trigger mechanism for the study of a healthy body. Also, in many other versions of the device, laser emitters are used to affect the brain of the patient. Using the laser leads to an increase of the resonant response. However, there is a risk of adverse effects of such exposure, so the laser emitter is not used in all models of Mezator equipment.

Customize

Run **Mezator** system. Double click **Mezator** icon on the Desktop (Fig. 1). Go to the main menu.



Fig. 1

Click the **CUSTOMIZE** button (Fig. 2).



Fig. 2

Settings menu (Fig. 3).

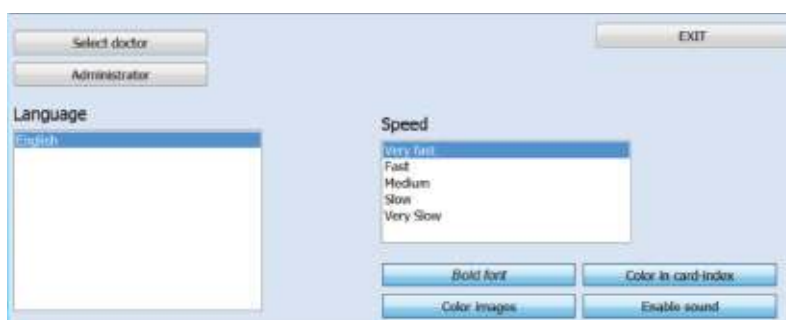


Fig. 3

Select doctor: allow to choose a doctor from the list of doctors working with the device. Each doctor can see only his/her own patients and can not see patients of other doctors.

Administrator: open administrator panel.

Language: change the language of the program. The base version of the program is delivered in English.

Exit: allow to return to the main menu.

Speed: change to different model.

Bold font: show all the text in bold.

Color images: can see colorized pictures of organs in the research scheme. If this button is clicked off the pictures are in black-and-white.

Color in Card-index: allow to highlight automatically in different colors of the organs with various functional statuses in a card file after researching.

Green marks organs without the expressed functional changes. Red is for organs with insignificant functional changes. Brown is for organs with considerable functional changes.

Enable sound: switch on sound signals when the device is working.

The button **Administrator** allows the owner into a administrator model (Fig. 4).

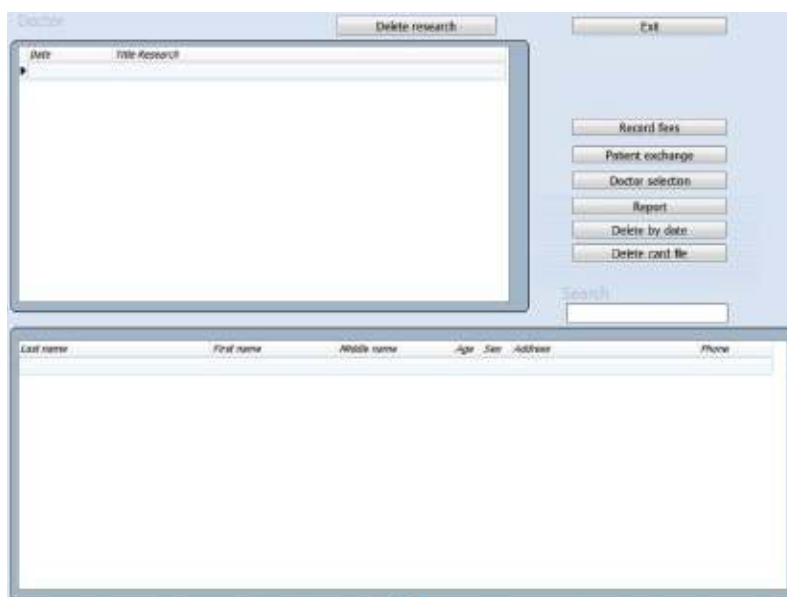


Fig. 4

Delete research: allows to delete separate researches with the button, located at the top of the window.

Patient Exchange: allows to transfer a patient to any other doctors from this list. Since this moment only the new doctor will be able to see information about the patient.

Doctor selection: allows to add a new doctor or to delete a doctor from the list. Attention! If you delete a doctor from the list of doctors, all datas of the patients treated by this doctor is deleted as well. Therefore before removal, pass all patients of that deleted doctor to the other one. The given button also allows to choose the doctor from the list for current work.

Report: shows many researches carried out by each doctor or by all doctors together.

Delete by daten: allow to delete all researches of a specified date. For example, a year to the present date, all previous researches made before this date will be deleted.

Delete card file: allow to delete a patient from a card file.

Patient exchange

Each doctor in the program can see only his/her own patients and can not see patients of other doctors. If it is necessary for the administrator to delete one or several doctors from the list, their patients and all data will be deleted together with the deletion of these doctors. If it is necessary for you to save data of these patients, please transfer their data to other doctors whom you are not going to delete before removal of doctors from the base (Fig. 5).



Fig. 5

Choose the doctor in the left top corner of the screen, WHOSE patients should be transferred to other doctor. In the right top corner of the screen choose the doctor WHO should receive the patient.

Then choose the patient whose data you wish to transfer and click **Single ->** or click **All =>**. You also can choose another patient and transfer his/her data further (Fig. 6). Be attentive as the data are transferred not copied! After that, you can return to the administrator's panel using the **Exit** button.

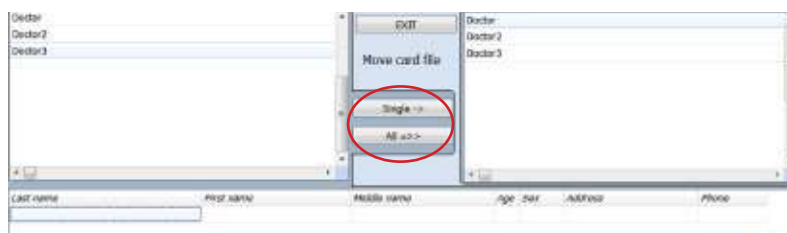


Fig. 6